

# Corsica

- Surveillance with team from INRAE-Angers:

- Marie-Agnès Jacques
- Sophie Cesbron
- Jessica Dittmer







## Ille Rousse

- Private garden
- Not yet confirmed in the olives
- We resampled olives for this year
- Only sample symptomatics







## Monastery at Corbara

- Almonds, Oak, Cork
- Scorch/golden leaf symptoms
- Removal of trees esp. almonds from the site, more coming up + each year







# Roadside Surveys

- Locations given by the gov. surveillance teams
- Marie-Agnes team is following up on known positives, or indeterminates.
- Total of approx. 54 samples collected over 3 days
- 1 person samples, 1 person checks GPS location, 1 person labels bags and packs them.
- Photos of plant, symptoms and labelled bag











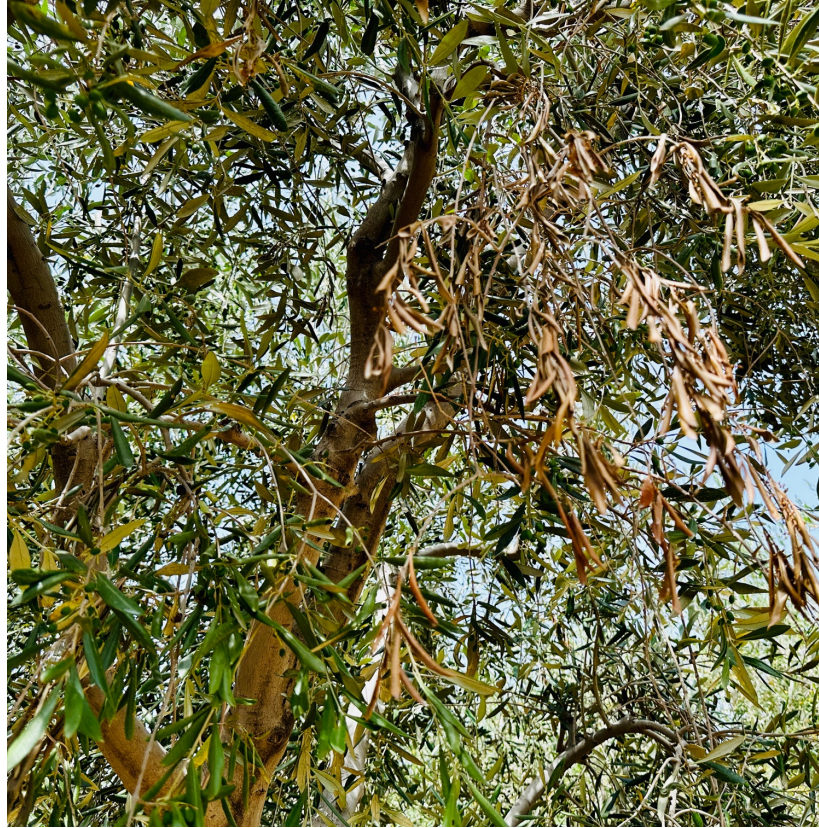


## Olive production

- Olive producer
- Approx. 20 year old planting
- Production down close to 50%







## Olive production

- Corsican variety, and Lecino
- Growers have an excellent understanding of the subspecies and sequence types
- Symptoms not quite typical





# Biosecurity

- Seen at the airport
- Perfect example of human movement of material
- Corsica producers are jealous of our biosecurity system







## Angers

- ANSES – French National Plant Health Laboratory
- INRAE – Research for Agriculture Food and Environment



# Angers - ANSES

- French national plant health laboratory
- Closest to our style of diagnostic labs that we saw
- Split up in various locations around France
- We visited the Bacteriology team
- Really nice labs





# Angers - INRAE

- INRAE = Research for Agriculture Food and Environment
- Sample prep on Polygala sp. and some olive samples
- VERY time consuming
- Definite potential bottleneck in a response situation







## INRAE – extractions

- Xylem tissue
- Sonication
- Shaking
- Pos control stash





## INRAE - Glasshouses

- BC3 glasshouse
- Polygala infection experiment – no infection, 12 months!

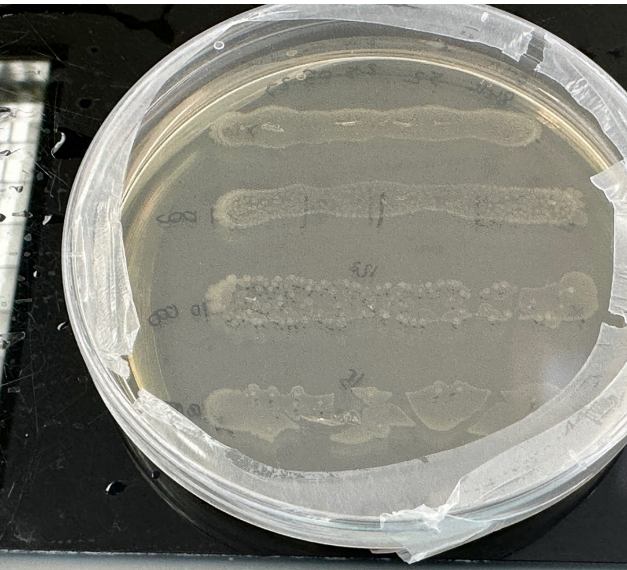






## Angers - INRAE

- Hands on DNA extraction – it was successful!
- Helped trial the Maxwell kit for the lab
- French bacterial culture collection
  - Perrine Portier
  - Xylella cultures
  - Other bacterial cultures





# Summary

- Best to sample symptomatic, taking samples from around and below the symptomatic branches
  - usually located in the top 1/3 of the tree
- Stems/twigs are preferred sample types, especially for olive, almond and other woody hosts
  - ideally with both live and dead branches, stems need to be green, not be new season if want replicates, collect 3 lots per tree
- When no symptoms are present on large hosts, take a sample from each quadrant/quarter
  - top 1/3 of the tree
  - collect from at risk hosts – ie material that has been imported at some point
- Grapevine – stems as preference, but petioles and leaf come too





# Outcomes

- Updated NDP for *Xylella fastidiosa* to follow
- This workshop
- Euphresco projects x2
- MOU with Blanca Landa and team in Cordoba
  - New project ideas for future *Xylella* diagnostic with our new colleagues
- WA Olive industry speaking invitation

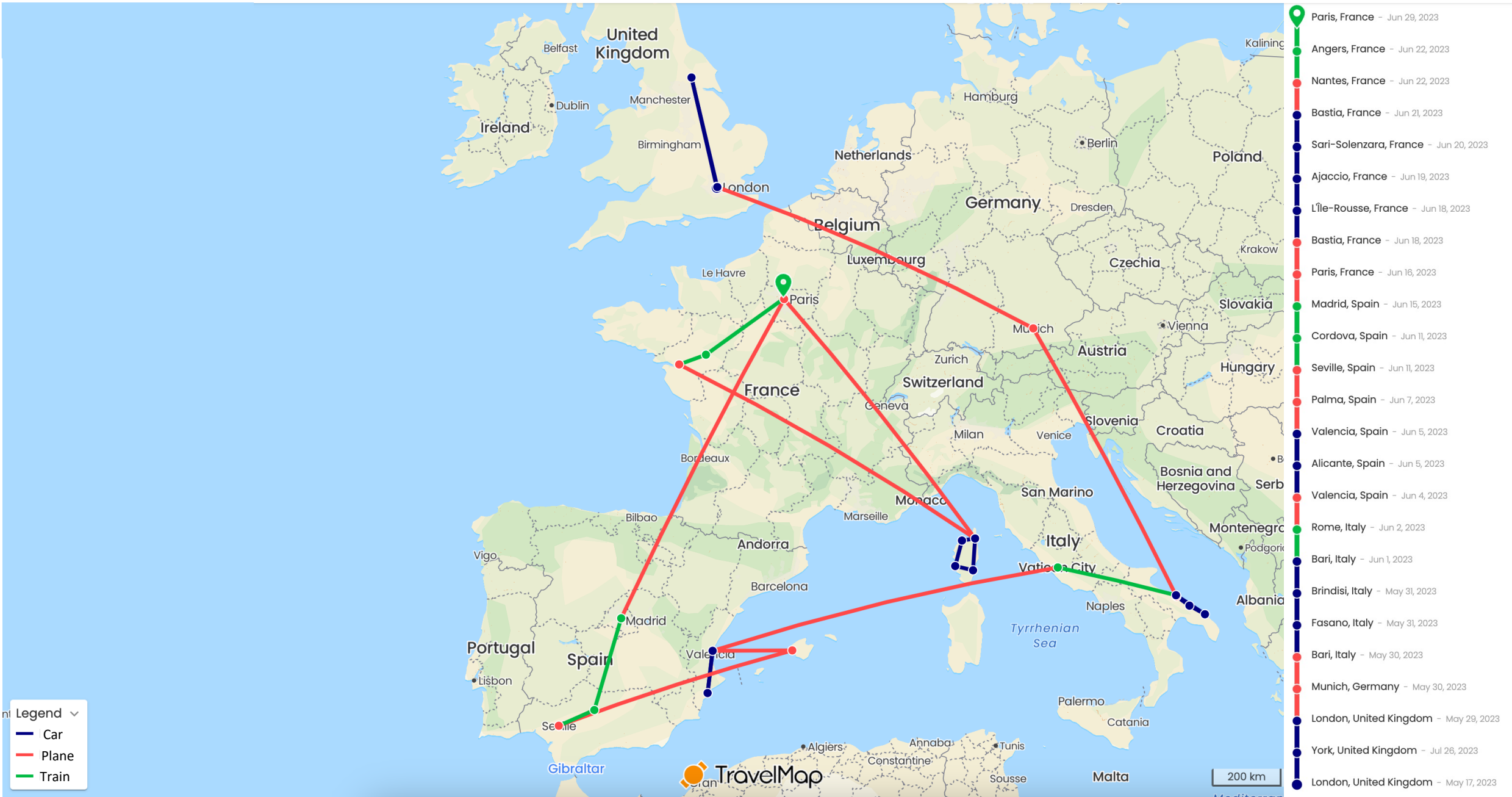


Thanks:

- Hort Innovation **Hort  
Innovation**
- Plant Mol Biol in DDLS
- Toni Chapman @ NSW-DPI
- Luciano Rigano @ MPI-NZ
- Our hosts in every laboratory and field site











Flights

11



Cancelled/ changed 3



Countries

4



Hotels

13



Hotels (dodgy) 2



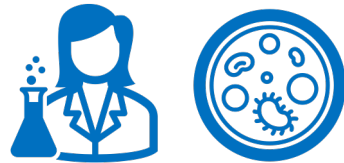
Shoes

2



Trains

5



Teams visited 7



Bags

10



Taxis

16



Photos taken 6,042  
"Good" Photos 1,390



Presentations 9



Hire cars

2



Steps

548,627



Illness

0







