

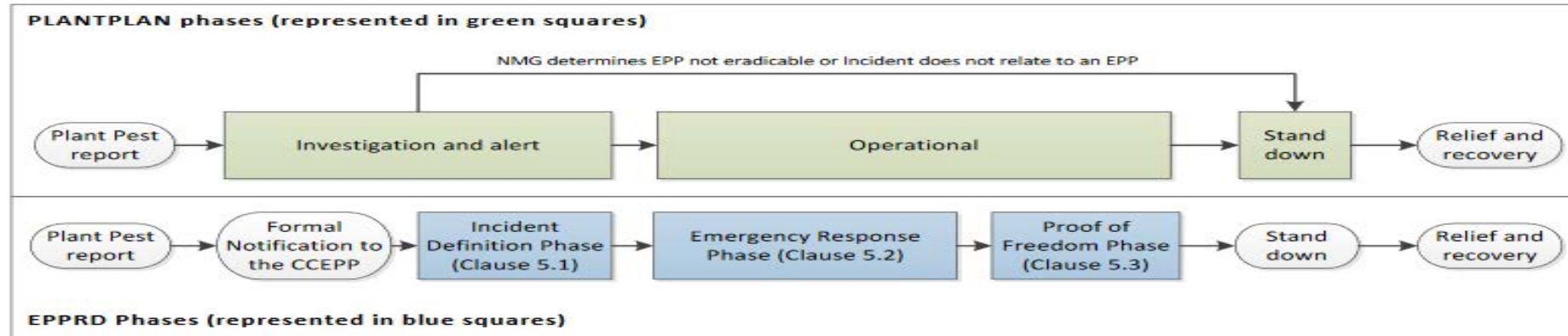
Are we ready?

APPS *Xylella* Workshop

November 2023

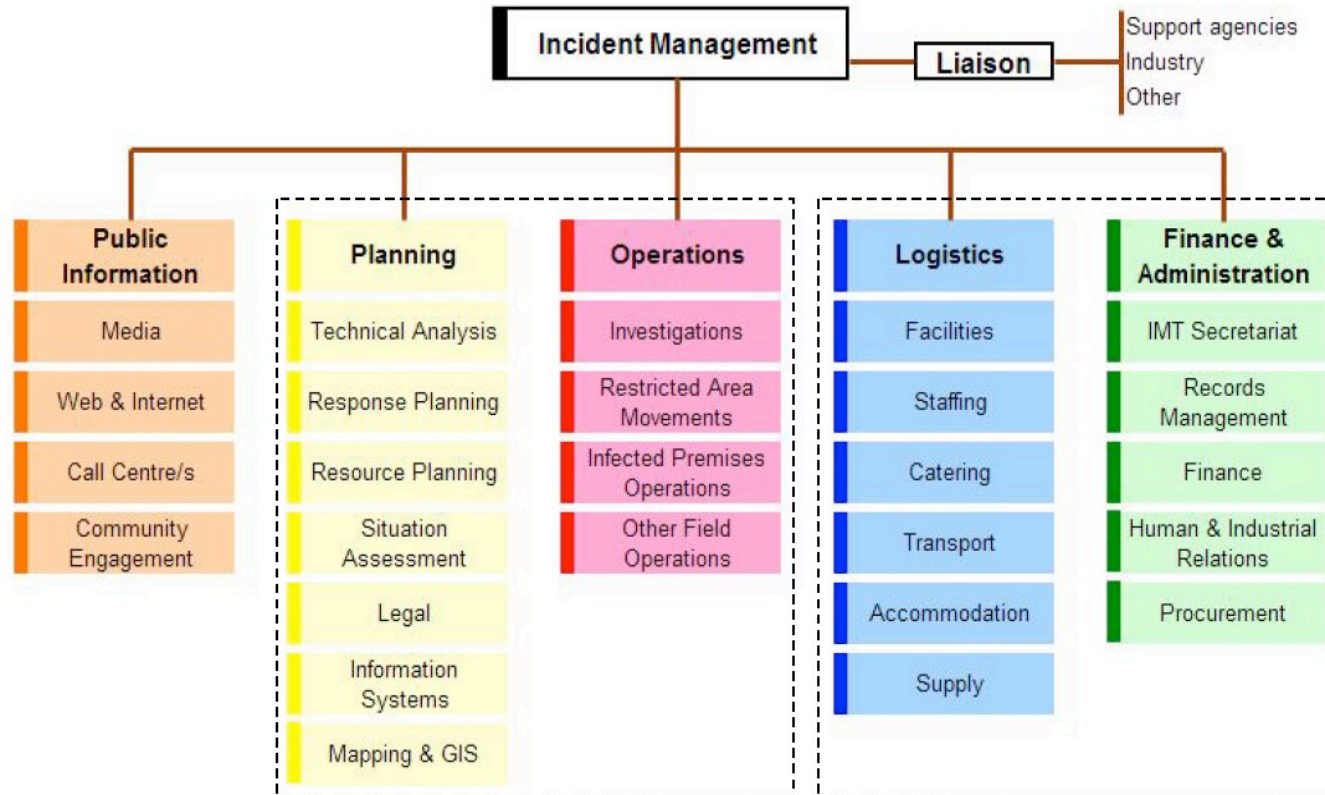
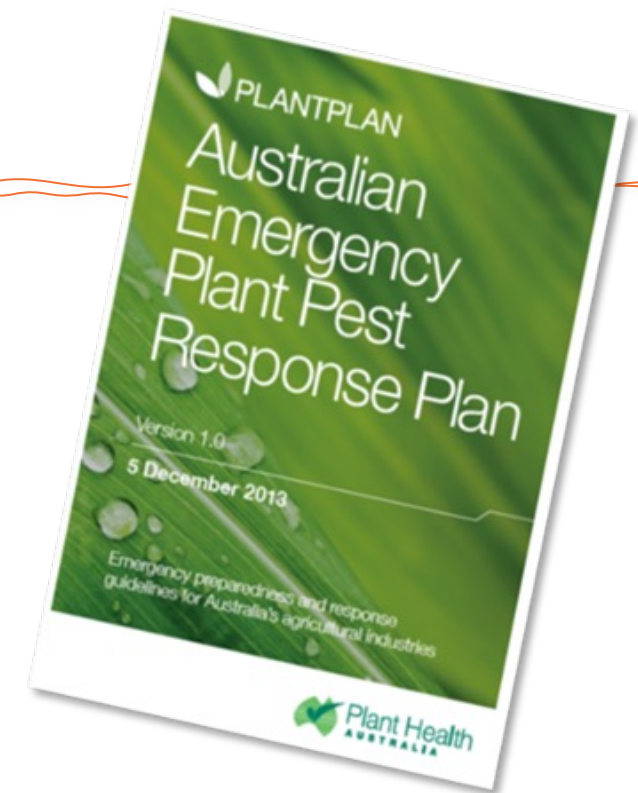


How is a response managed?



- EPPRD applies to Xylella (Category 2 EPP) → shared decision-making and costs
- Government or Industry surveillance program or a public report detects a suspect sample:
 - Submitted to local plant pathology lab - diagnosis
 - Report made to the Chief Plant Health Officer (CPHO) of the State (the lead agency)
 - Alert to the Australian Government Chief Plant Protection Officer and then other State / Territory CPHO's
 - **Immediate containment efforts**
- ACPPO convene CCEPP and NMG
- Lead Jurisdiction
 - Develops a Response Strategy
 - Stands up their IMT

How is a response managed?



What would the response strategy be?

Mission: To eradicate Xylella from Australia

Strategies:

Find it

1. Identify the distribution of Xf in Australia

Kill it

2. Destroy all infected materials

Contain it

3. Prevent the spread

Survive it

4. Support affected industries and communities

We also want to...

5. Build public awareness

6. Ensure the safety of response activities

What will the IMT ask?

How do we...

1. Find it?

- Surveillance methodology (including what plants and vectors, rates & distances)
- Sampling methodology
- Tracing (how far back?)
- Diagnostic capacity

2. Kill it?

- Destruction and Disposal options
- Decontamination requirements
 - People & equipment
 - Fallow periods

3. Contain it?

- Buffer zones (Control Areas, Restricted Areas)
- Destruction zones (how far, what species)
- Infected plant material management
- Vector controls
- Host material treatment & movement controls
- Other pathways

Firstly....

Is it feasible to eradicate?